

# ICON Pro Series Display Wall Controller

[www.deltadisplays.com](http://www.deltadisplays.com)

# Video Wall Control Systems

The Delta ICON Pro controller is a multi-screen graphics controller running on the Windows® Platform. The ICON Pro Series controller drives multiple cubes to form one large logical screen called a Video wall or a data wall. It is designed for capturing, displaying and managing varied sources on the Video wall. ICON Pro controller is a configurable system and can drive multiple Video walls having up to 100 units or more. It's flexible enough to display local applications, network-streamed desktops, and direct-connected DVI, RGB and video inputs – anywhere, and of any size on the wall, all within your 24/7 control room. ICON Pro offers the information you need to see, in the way you wish to see it and where you wish to see.



## Processors:



ICON Pro series controllers support a variety of Intel® processors such as Dual core, Quad Core Xeon, i3, i5 and i7 processors to deliver optimal performance for high-end visualization applications.

## Advanced processing architecture:



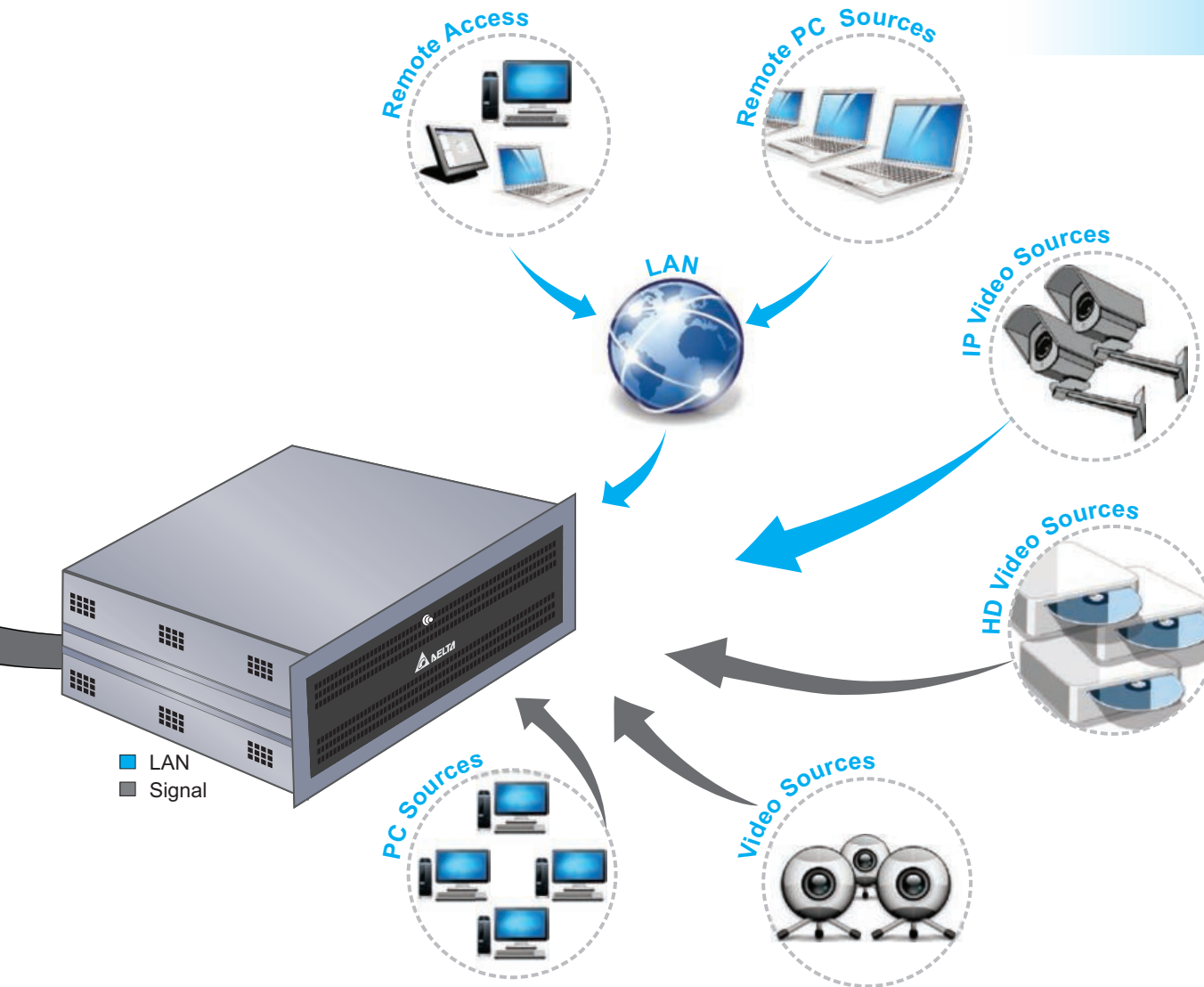
ICON Pro controller supports PCI- express, switch fabric and intelligent high-bandwidth backplane architecture, creating a true non-blocking communication infrastructure for high demanding applications.

## Input/ Output resolution capability:



ICON Pro is able to capture and display a wider range of input sources (i.e. SD video/ HD video/ DVI/ RGB/ Component / HDSDI/ IP streams) with resolution support up to 4k and drive all types of digital and Analog display devices with native resolutions up to WUXGA.

# You're In Control



## Streaming video Inputs:



ICON Pro controller supports decoding of multiple camera types, multiple formats (MPEG-2, MPEG-4, H.264), custom formats and resolutions from QCIF, D1 to megapixel & HD. Decoding and display of video streams using RTP, RTSP, TCP, UDP and IP network protocols. Hundreds of IP video streams can be decoded and displayed across any large video wall.

## In built redundancy:



ICON Pro has in built redundancy for critical components for uninterrupted operation:

- ✓ Redundant hot-swap power supplies
- ✓ Redundant hot-swap HDD
- ✓ Redundant Ethernet
- ✓ Redundant Fans
- ✓ Fully Redundant Controller

## Operating systems:



Runs on all standard Windows® operating systems and supports 64 bit systems. It also offers support for Linux® Emulation to ensure easy integration with Unix/ Linux work stations.



# Wall Management- ICON Pro Studio

Delta offers advanced wall management software (ICON Pro studio) a perfect compliment to the ICON Pro Controller. ICON Pro Studio works on a Client-server architecture to manage and control the display content from a wide range of input sources. With ICON Pro studio, windows on the Video wall can be opened, placed, moved and sized. Layouts can be saved and recalled. The ICON Pro studio interface dynamically adjusts to display whatever type of source is connected to the controller and the software's interface complies with the familiar Windows design standards making it intuitive and easy to learn.

## Wall configuration & Setup

ICON Pro studio has an easy-to-use graphics user interface where any operation can be set up by simple mouse clicks. The configuration and set-up functions have immediate effects so no reboot is needed.

## Input management

System provides general input handling and comprehensive wall management over the full display wall. The ICON Pro controller handles the wall resources running locally on the wall controller or remotely from any operator workstation in the network. All input sources can be displayed anywhere on the video wall in any size. Each source can be displayed once or repeated multiple times.

## Authentication system

Administrator system assigns user password and privileges to remote operators. The administrator gives different rights for each user regarding the control of the wall resources. ICON Pro studio offers 4 levels of Authentication (User accounts, Permissions for functionality & Roles etc).

## Layout scheduling

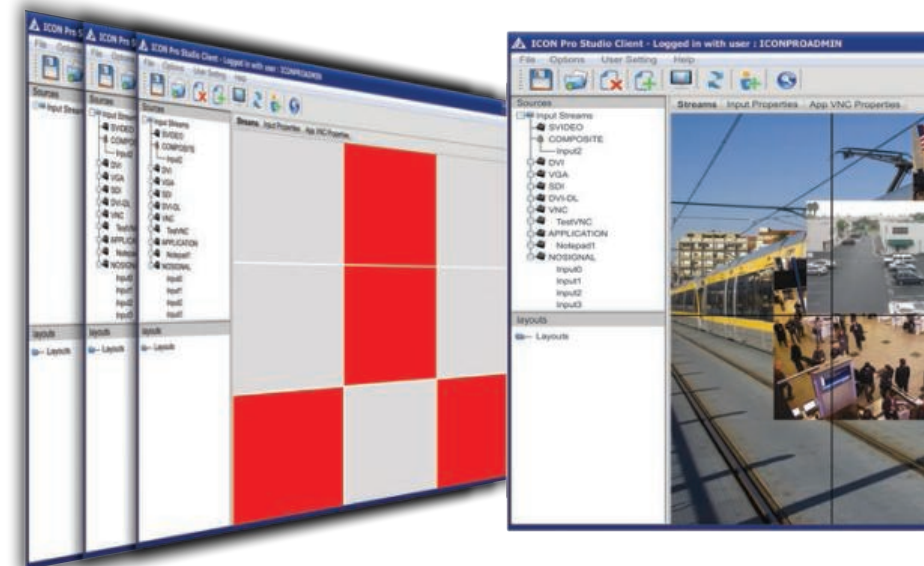
ICON Pro Studio provides the ability to create save and quickly recall saved layouts directly from the user interface or from user-assignable hot-keys. Auto launching & scheduling of layouts is possible as per user specified events and time.

## Layout management

Display multiple source windows anywhere and in any size. Also one can create layout to show just one image on the entire display or place multiple source windows across the entire display.

## Work space allocation

ICON Pro studio provides a functionality to the administrator to define and allocate pixel wise work space for a particular operator or a group of operators when working on a Video wall.



# Control At Your Finger Tips



## Ticker

Ticker message can be positioned anywhere on the display wall. Inside the ticker window, font size, colour and background can be set.

## Window Titles and Borders

ICON Pro Studio supports custom window borders and tiling, allowing for more effective management of the video wall.

## Remote management

ICON Pro – remote manager provides an ability to access and display the screen contents of any Windows workstation in the LAN as well as control it with the local keyboard and mouse without the need for special hardware.

## Cube control

ICON Pro – cube control, monitors the health of the overall display system. Through a graphical interface, system components can be monitored, alarms and notifications can be triggered according to overall system requirements

## API interface

The Application Programming Interface (API) allows third party systems to talk and control the ICON Pro controller from within their interfaces.

## Live View

With the Live View function the entire contents of a display or a large screen can be followed live. This function helps to transmit the entire wall content live to a mini wall/ PC/ Desktop view.

## More Features:

- External Alarm Management
- Input Carousel
- Offline Layout Creation
- Grid Management
- Snapshot
- Active Directory Support
- Input Snap Sensitivity
- iPad Management



# Technical Specifications

Controller	A configurable system to meet individual project requirements
Chassis	19" industrial Rack mount
	Lockable front door to protect drives
Operating System Platform	Windows 7 / 8 - 64 bit / Win Server 2008
Processor options	Xeon / i3 / i5 / i7 / Others
RAM	Std. 4 GB DDR3, higher on request
HDD	Support up to minimum 2 HDD
	Std.: 500 GB , can be upgraded on request
Networking	Dual-port Gigabit Ethernet Controller inbuilt
	Supports Add on copper/ optical fiber adapters
RAID	RAID 0, 1, 5, 10 support
Cooling	Forced cooling
Indicators	LED's for HDD activity and Power status
Input / Output support	USB/ LAN/ VGA/SERIAL SATA/IDE port
Switches	Power On/Off and System Reset
Monitoring options	CPU, FAN, Temperature and alarms
Accessories	DVD +RW ,Keyboard and mouse

Outputs	2 or higher
Output Resolution support	DVI: 1920x1200 RGB: 2048x1536
Universal Input Format	DVI /RGB/Component/HDMI
Video Input Format	NTSC/ PAL/ SECAM
Streaming Input	Hardware & Software Decoding of streaming media inputs
Resolution Support for IP streams	HD, D1, VGA, CIF & QCIF
Format	MJPEG, MPEG-2 , MPEG-4, H.264, Custom formats
Audio	High Definition Audio CODEC
Supported Input Type	4K / SD video / HD video / DVI / HDMI / RGBHV / VGA / Component video / HD-SDI / Streaming video / Network / RSS feed / Ticker
Redundancy support	Power Supply, HDD, Cooling Fan, LAN port & Controller
Scalability	Display multiple source windows in any size, anywhere on the wall
Control functions	Brightness / contrast / saturation / Hue / Filtering/ Crop / rotate
Power Supply	(1 + 1) Redundant AC-DC high-efficiency power supply
	AC Voltage 100 - 240V, 50-60Hz
Temperature	Operating Temperature: 0° to 40°C (32° to 95°F)
	Non-operating Temperature: -40° to 70°C (-40° to 158°F)
Humidity	Humidity: 10 – 90% non-condensing



# References



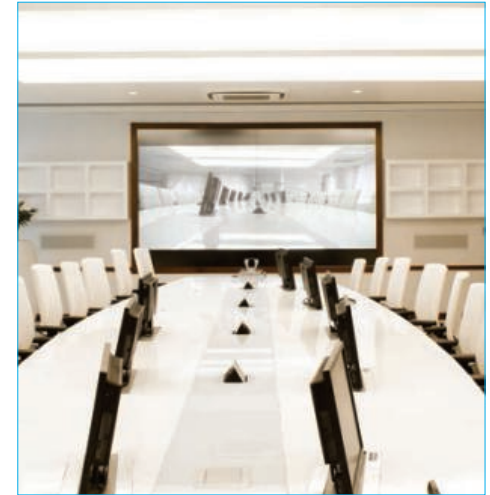
**Surveillance**



**Data Center**



**Telecom**



**Collaborative Room**



**Traffic**



**Surveillance**



**Process Control**



**Utilities**

# GLOBAL OFFICES



Website [www.deltadisplays.com](http://www.deltadisplays.com)  
Contact Us [vw.sales@deltadisplays.com](mailto:vw.sales@deltadisplays.com)

## Europe

### NETHERLANDS

Delta Electronics Europe  
Zandsteen 15,2132 MZ  
Hoofddorp,  
The Netherlands



### SLOVAKIA

Delta Electronics (Slovakia) s.r.o.  
Priemyselna ulica 4600/1  
018 41 Dubnica nad Vahom  
Slovakia



### FRANCE

Delta Electronics (France) S.A.  
ZI du bois Chaland  
2 15 rue des Pyrenees,  
Lisses 91056 Evry Cedex



## North America

### USA/PORTLAND

Portland Office  
1600 NW Compton Drive,  
Suite 100, Hillsboro, OR 97006



### USA/FREMONT

Delta Products Corporation  
Fremont Office  
4405 Cushing Parkway,  
Fremont, CA 94538, U.S.A



### BRAZIL

Delta Greentech (Brasil) S/A  
Rua Almirante Alexandrino,  
3100 - Afonso Pena  
83045-210 - São Jose dos  
Pinhais- PR - Brasil



## Asia

### TAIWAN

Delta Electronics, Inc.  
186 Ruey Kuang Road,  
Neihu, Taipei 11491, Taiwan



### INDIA

Delta India Electronics Pvt. Ltd  
Plot No 43 Sector 35, HSIIDC  
Gurgaon 122001, Haryana, India



### THAILAND

Delta Electronics (Thailand) PCL  
909 Soi 9 Moo 4, E.P.Z.Bangpoo  
Industrial Estate, Tambon Prakasa,  
Amphur Muang Samutprakarn,  
Samutprakarn 10280, Thailand



### SINGAPORE

Delta Electronics Int'l (S) Pte. Ltd.  
4 Kaki Bukit Ave 1, #05-05  
Singapore 417939



### KOREA

Delta Electronics (Korea) Inc  
1511, Byucksan Digital Valley  
6-cha, Gasan-dong,  
Geumcheon-gu,  
Seoul, Korea 153-704



### CHINA

Delta Electronics (Shanghai) Co., Ltd.  
No.182 Minyu Road,  
Pudong Shanghai, P.R.C.  
Post Code: 201209



## QR Code



The Delta logo is a trademark of Delta Group. All trademarks used in the brochures are the property of their respective trademark owners. Specifications are subject to change without prior notice. Projection images are simulated. Copyright ©2009 Delta Electronics Inc. All rights reserved. This document may not be copied in any form without written permission from Delta.